

Type M

RUBBER ISOLATORS

Features

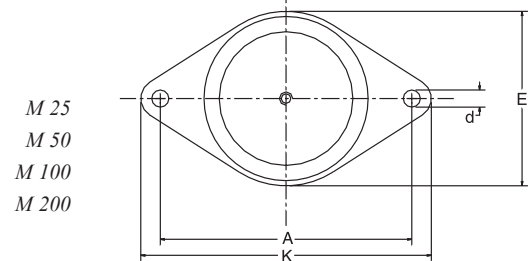
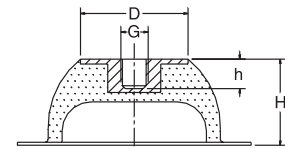
Silex Type M anti-vibration mounting is specially designed with a cup-shape recess underneath it that provides high resilience at low loads. Its simple construction and low height makes installation easy, even in small spaces.

Tandem assembly increases deflection by a factor of two (2).

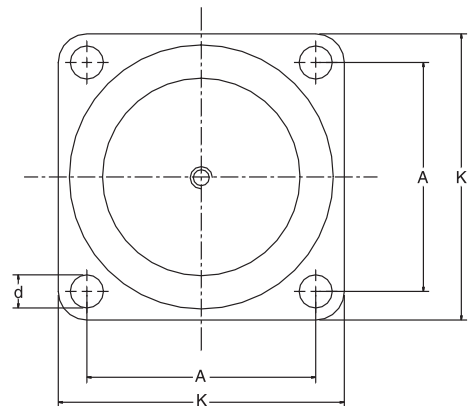
Application

Type M is recommended where resilience is required and the interfering frequency is low. It is also very suitable for shock isolation and passive isolation. For example, to protect sensitive equipment such as scales, instruments, and measuring apparatus. Where a more flexible mounting is required, two Type M mounts can be connected in series to double the resilience. This mount can be used for machines such as:

- Compressors
- Electric motors
- Refrigerators Fans
- Pumps
- Noise control enclosures
- Test cell equipment



M 400
M 600
M1500



Dimensions

Type	D		E		A		K		H		d		h		G		Approx. Wt.	
	in	mm	in	mm	in	mm	in	mm	in	mm	in	mm	in	mm	UNC	in	kg	lbs
M 25	33	1.30	56	2.21	66	2.60	85	3.35	25	0.98	8,0	0.32	11	0.43	M 8	UNC 5/16"	0.07	0.15
M 50	45	1.77	76	2.99	92	3.62	114	4.49	35	1.38	10,0	0.39	14	0.55	M 10	UNC 3/8"	0.16	0.35
M 100	53	2.09	96	3.78	110	4.33	136	5.35	40	1.58	11,5	0.45	15	0.59	M 10	UNC 3/8"	0.26	0.57
M 200	58	2.28	101	3.98	124	4.88	151	5.95	45	1.77	11,5	0.45	13	0.51	M 10	UNC 3/8"	0.42	0.92
M 400	78	3.07	-	-	120	4.72	150	5.90	63	2.48	14,5	0.57	18	0.71	M 12	UNC 1/2"	1.06	2.33
M 600	100	3.94	-	-	160	6.30	200	7.87	85	3.35	14,5	0.57	25	0.98	M 16	UNC 5/8"	2.35	5.17
M 1500	186	7.33	-	-	250	9.84	310	12.20	160	6.30	18,0	0.71	43	1.69	M 24	UNC 1"	9.43	20.75

Silex Innovations Inc.
Phone 905 612 4000
Fax 905 612 8999
www.silex.com

Lit-0017 04-05

one source ... one supplier

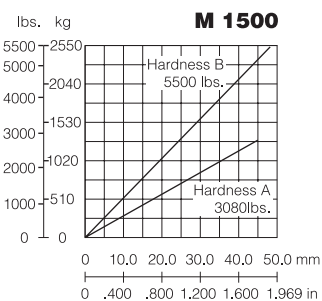
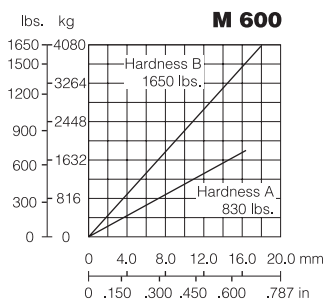
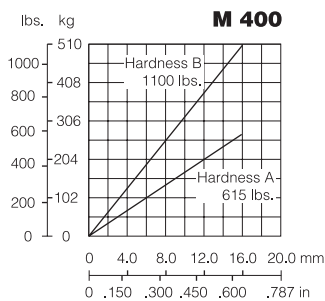
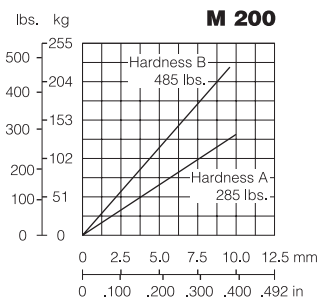
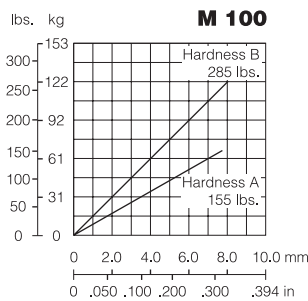
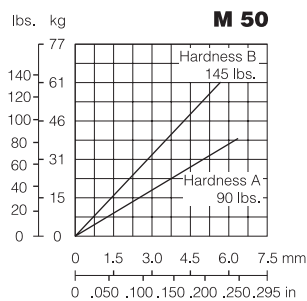
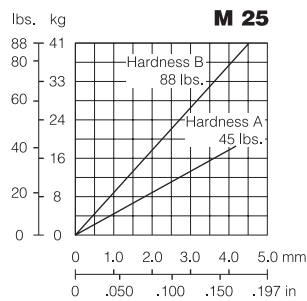
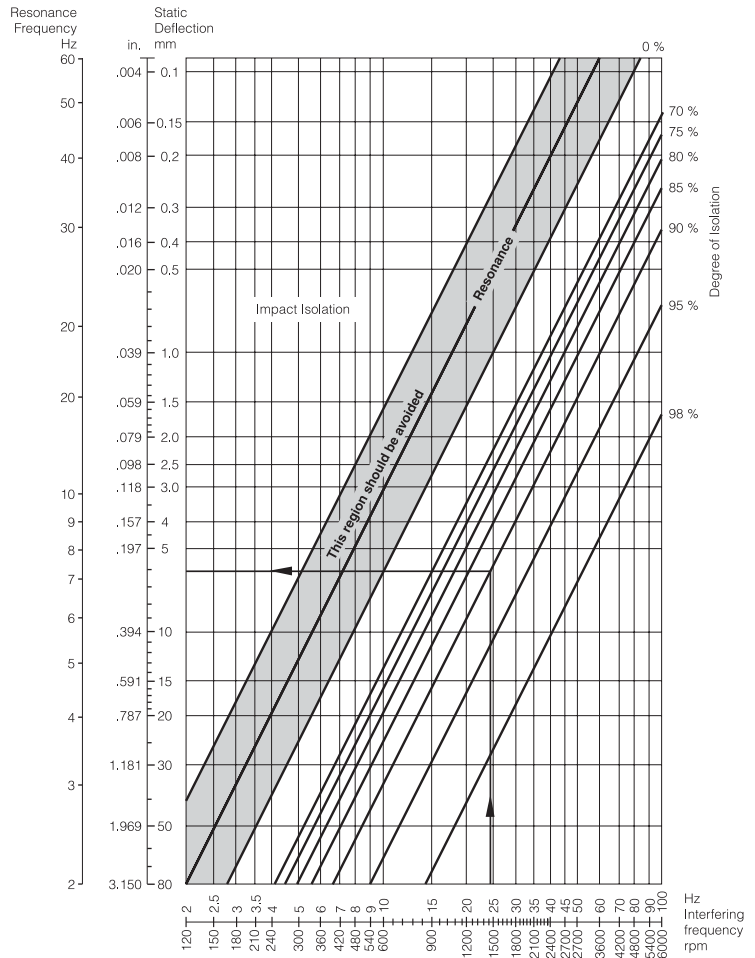
800 387 7818

Order Information/Selection

Determine the number of isolators and the load per isolator prior to selecting the correct mount. Then select the mounts that provide the greatest deflection without exceeding the maximum allowable load on the mount. (Refer to the static deflection curves listed below.)

Each mount is available in 2 hardnesses. Hardness A (green) provides a lower maximum load isolation efficiency. Once the mount is selected at the load the deflection can be found. Refer to the nomograph on the right to identify the isolation efficiency.

When ordering, specify hardness. For example, "M-100 A" or "M-100 B."



Silex Innovations Inc.
 Phone 905 612 4000
 Fax 905 612 8999
www.silex.com

Lit-0017 04-05

one source ... one supplier™
800 387 7818