

## Type RA

### RUBBER ISOLATORS

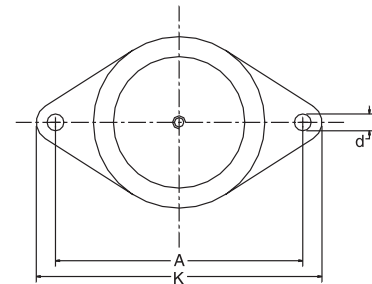
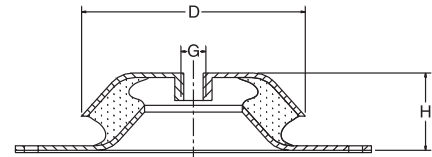
#### Features

Its rubber construction provides this isolator with both good vertical flexibility and horizontal stability. Its simple construction and low height makes installation easy, even in small spaces. A layer of rubber on the underside of this isolator efficiently prevents the machine from "travelling" so that bolting it to the floor is often unnecessary. In addition, the dome shape of the metal cover helps protect it against oil drips.

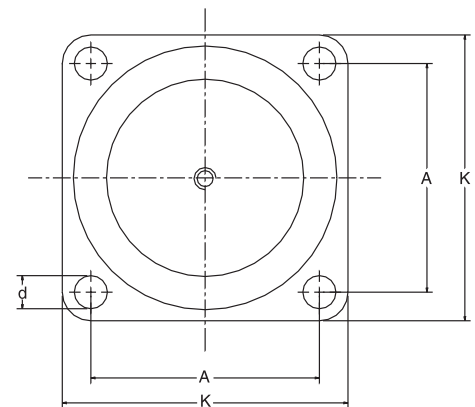
#### Application

Silex Type RA is effective for isolating many different types of machines against vibration and noise. It is strong and stable and the elastic deflection constant is practically the same for all directions. The Type RA is particularly suitable for the following types of machines:

- Compressors Pumps
- Combustion engines
- Printing machinery
- Presses and punches
- Rolling mills
- Fans
- Converters
- Machine tools



RA 100  
RA 200  
RA 350  
RA 500  
RA 800



RA 1200  
RA 1800

#### Dimensions

Type	D		A		K		H		d		G		Approx. Wt.	
	in	mm	in	mm	in	mm	in	mm	in	mm			kg	lbs
RA 100	79	3.11	110	4.33	130	5.12	30,0	1.18	9	0.35	M 10	UNC 3/8"	0.33	0.73
RA 200	94	3.70	124	4.88	150	5.91	35,0	1.38	10	0.40	M 10	UNC 3/8"	0.47	1.03
RA 350	101	3.98	144	5.67	175	6.89	38,0	1.50	14	0.55	M 16	UNC 5/8"	0.74	1.63
RA 500	123	4.84	158	6.22	192	7.56	42,0	1.65	14	0.55	M 16	UNC 5/8"	1.02	2.24
RA 800	144	5.67	182	7.17	216	6.69	48,0	1.89	14	0.55	M 16	UNC 3/4"	1.59	3.50
RA 1200	161	6.34	140	5.51	170	6.69	58,0	2.28	14	0.55	M 20	UNC 3/4"	2.19	4.82
RA 1800	181	7.13	160	6.30	190	7.48	66,5	2.62	14	0.55	M 20	UNC 3/4"	2.33	5.13

Silex Innovations Inc.  
Phone 905 612 4000  
Fax 905 612 8999  
[www.silex.com](http://www.silex.com)

Lit-0014 04-05

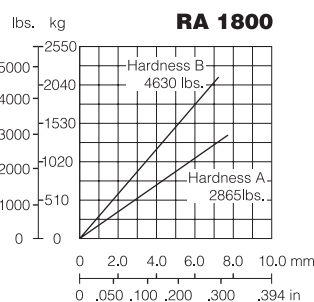
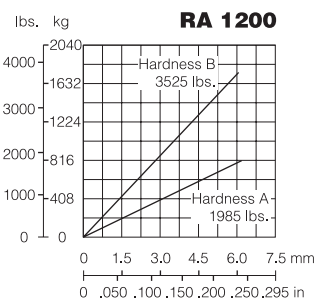
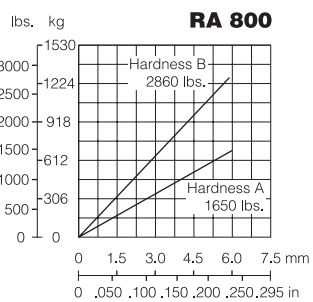
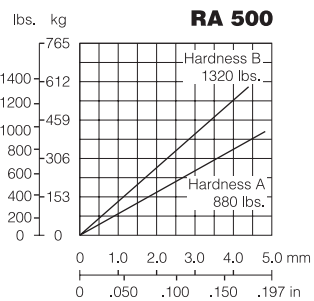
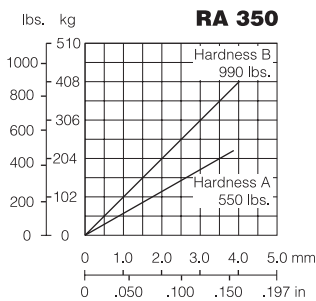
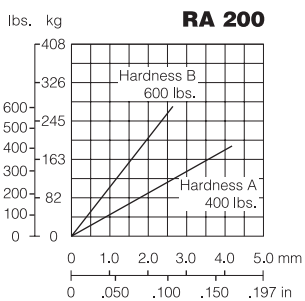
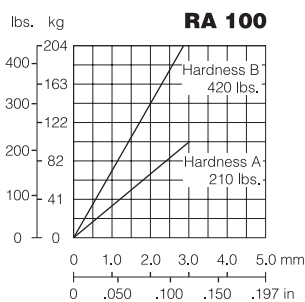
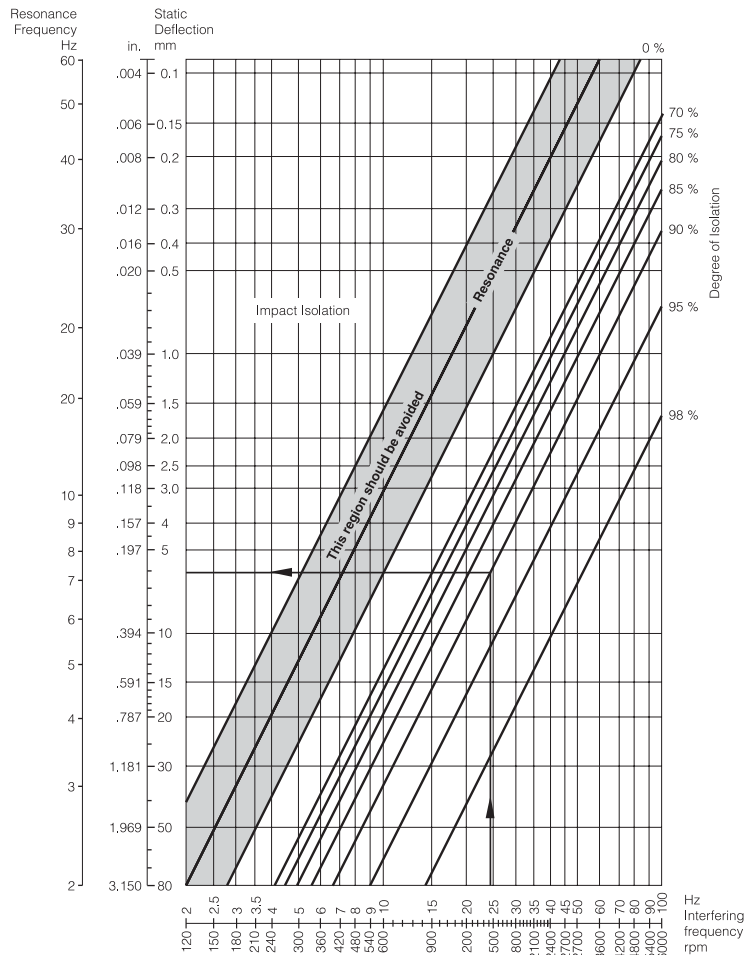
one source ... one supplier  
**800 387 7818**

# Order Information/Selection

Determine the number of isolators and the load per isolator prior to selecting the correct mount. Then select the mounts that provide the greatest deflection without exceeding the maximum allowable load on the mount. (Refer to the static deflection curves listed below.)

Each mount is available in 2 hardnesses. Hardness A (green) provides a lower maximum load isolation efficiency. Once the mount is selected at the load the deflection can be found. Refer to the nomograph at the right to identify the isolation efficiency.

When ordering, specify hardness. For example, "RA-100 A" or "RA-100 B."



Silex Innovations Inc.  
 Phone 905 612 4000  
 Fax 905 612 8999  
[www.silex.com](http://www.silex.com)

one source ... one supplier™  
**800 387 7818**