

Type RA EM

RUBBER ISOLATORS

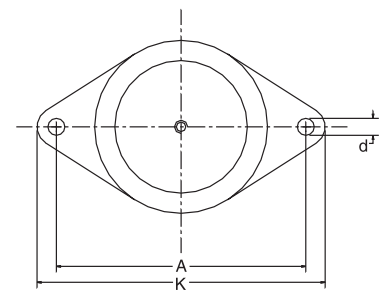
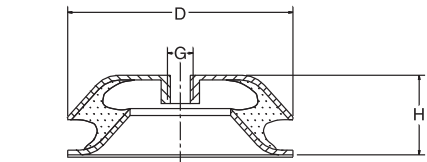
Features

Silex Type RAEM anti-vibration mounting is shaped for excellent resilience and good lateral stability. Its simple construction and low height makes installation easy, even in small spaces. A layer of rubber on the underside of this isolator efficiently prevents the machine from "travelling" so that bolting it to the floor is often unnecessary. In addition, the dome shape of the metal cover helps protect it against oil drips.

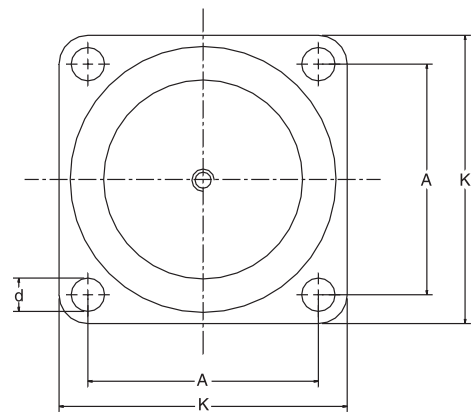
Application

Silex Type RAEM is effective for previously difficult to isolate light and heavy low-speed machines. The isolator provides both stable mounting and satisfactory isolation against vibration and noise. It is particularly suitable for:

- Pumps
- Combustion engines
- Converters
- Presses and punches
- Fans
- Rolling mills
- Paper machines
- Various domestic machines



RA 40 EM
RA 125 EM
RA 350EM
RA 800 EM



RA 1500 EM
RA 2500 EM

Dimensions

Type	D		A		K		H		d	G	Approx. Wt.			
	in	mm	in	mm	in	mm	in	mm						
RA 40 EM	64	2.52	88	3.46	110	4.33	35.5	1.36	9.0	0.35	M 10	UNC 3/8"	0.26	0.56
RA 125 EM	84	3.31	110	4.33	135	5.31	35.5	1.35	11.0	0.43	M 10	UNC 3/8"	0.37	0.81
RA 350 EM	110	4.33	144	5.67	175	6.89	42.0	1.65	14.0	0.55	M 16	UNC 5/8"	0.80	1.76
RA 800 EM	155	6.10	182	7.17	216	8.50	54.0	2.13	14.0	0.55	M 16	UNC 5/8"	1.78	3.92
RA 1500 EM	182	7.17	146	5.75	180	7.09	85.5	3.37	14.0	0.55	M 20	UNC 3/4"	3.00	6.60
RA 2500 EM	224	8.82	180	7.09	220	8.66	105.5	4.15	17.5	0.69	M 24	UNC 1"	4.62	10.16

Silex Innovations Inc.
Phone 905 612 4000
Fax 905 612 8999
www.silex.com

Lit-0016 04-05

one source ... one supplier

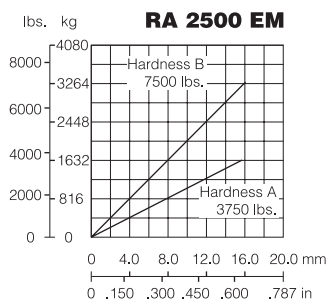
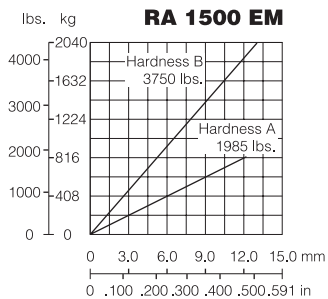
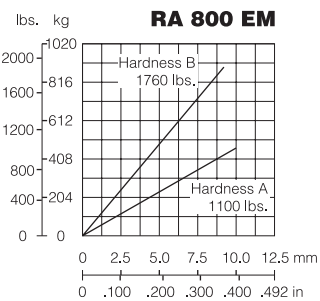
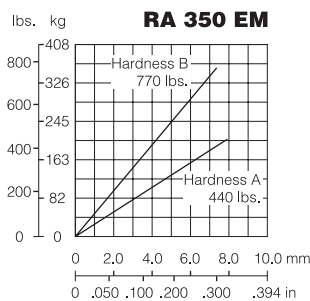
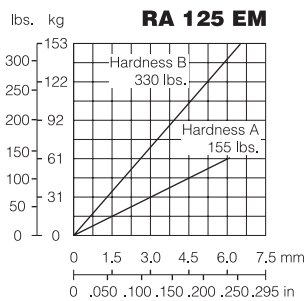
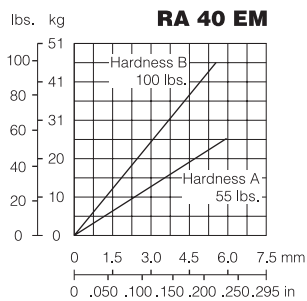
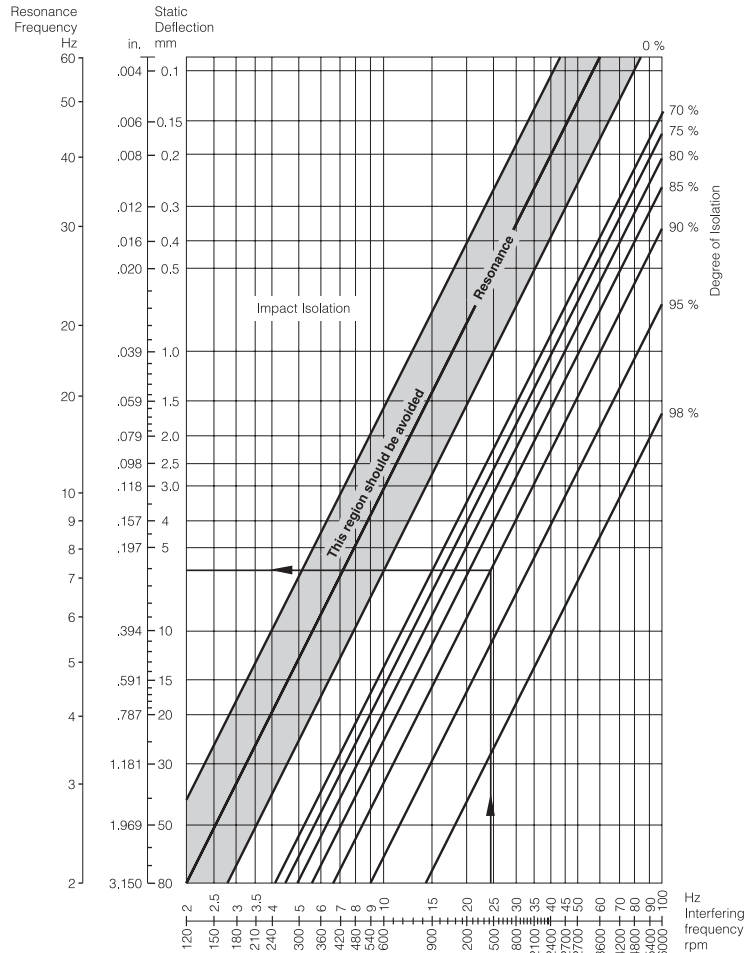
800 387 7818

Order Information/Selection

Determine the number of isolators and the load per isolator prior to selecting the correct mount. Then select the mounts that provide the greatest deflection without exceeding the maximum allowable load on the mount. (Refer to the static deflection curves listed below.)

Each mount is available in 2 hardnesses. Hardness A (green) provides a lower maximum load isolation efficiency. Once the mount is selected at the load deflection can be found. Refer to the nomograph on the right to identify the isolation efficiency.

When ordering, specify hardness. For example, "RA-100 A" or "RA-100 B."



Silex Innovations Inc.
 Phone 905 612 4000
 Fax 905 612 8999
www.silex.com

Lit-0016 04-05

one source ... one supplier™
800 387 7818